

**PLAT OF SURVEY  
 (RETRACEMENT)  
 LOUISA COUNTY, IOWA**

**LEGAL DESCRIPTION**

THE WEST HALF (W 1/2) OF THE SOUTHEAST QUARTER OF THE NORTHEAST QUARTER OF SECTION THIRTY-FOUR (34), AND THE EAST ONE-FOURTH OF THE SOUTHWEST QUARTER OF THE NORTHEAST QUARTER OF SAID SECTION THIRTY-FOUR (34); AND THE SOUTHWEST QUARTER OF SAID SECTION THIRTY-FOUR (34); AND THE WEST THIRTY (30) ACRES OF THE SOUTHWEST QUARTER OF THE NORTHEAST QUARTER OF SAID SECTION THIRTY-FOUR (34); ALL IN TOWNSHIP SEVENTY-THREE (73) NORTH, RANGE TWO (2) WEST OF THE FIFTH (5<sup>TH</sup>) PRINCIPAL MERIDIAN, SITUATED IN THE COUNTY OF LOUISA, IN THE STATE OF IOWA.

PROPRIETOR: ELEVEN OAKS FARM, INC.  
 SURVEY REQUESTED BY: EDWARD H. FEJNER  
 DATE OF SURVEY: DECEMBER 1, 2009

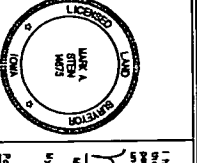
NOTE: THE NORTH-SOUTH CORNER MARK IS THE ONE RECORDED IN BOOK 1, PAGE 112. THE LATTER ONE WAS LOCATED 415 FEET NORTH OF THE FRONT ONE.

**AREA SUMMARY**

ROW	WITHOUT ROW	TOTAL
SE 1/4 NE 1/4	20.43 ACRES	20.43 ACRES
SW 1/4 NE 1/4	38.83 ACRES	38.83 ACRES
NE 1/4 SE 1/4	41.06 ACRES	41.06 ACRES
SW 1/4 SE 1/4	37.82 ACRES	37.82 ACRES
SE 1/4 SW 1/4	40.51 ACRES	40.51 ACRES
SW 1/4 SW 1/4	24.94 ACRES	24.94 ACRES
<b>ROW</b>		
20.43 ACRES		
38.83 ACRES		
41.06 ACRES		
37.82 ACRES		
40.51 ACRES		
24.94 ACRES		
<b>217.62 ACRES</b>		

**LEGEND AND NOTES**

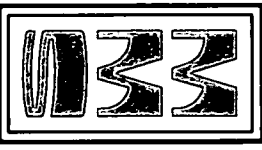
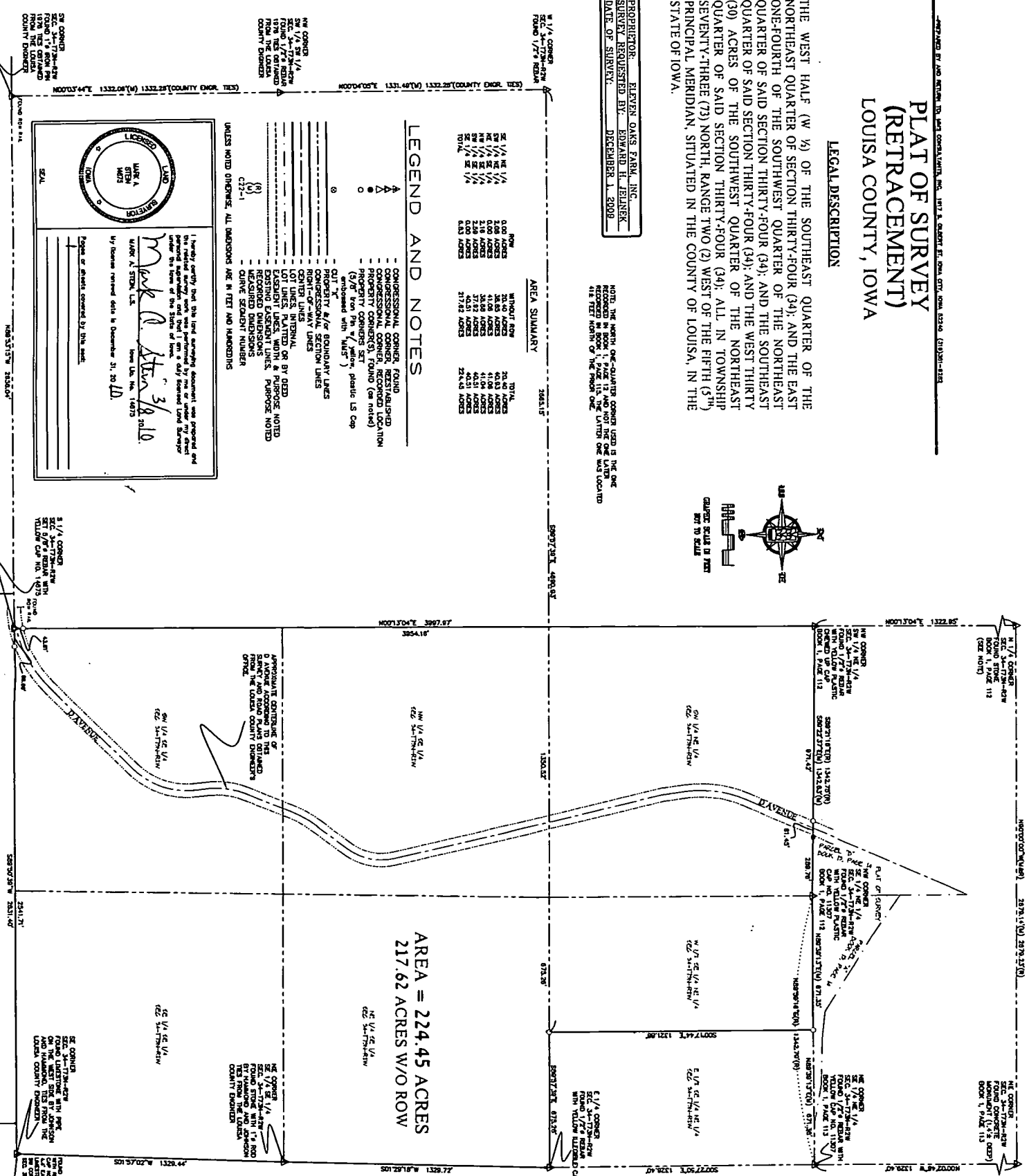
- ▲ CONGRESSIONAL CORNER, FOUND
  - △ CONGRESSIONAL CORNER, REESTABLISHED
  - CONGRESSIONAL CORNER, RECORDED LOCATION
  - PROPERTY CORNER SET (ON TOWNSHIP)
  - (S/W/ Ten Pin w/ yellow plastic LS Cap embossed with "MMS")
  - DITTY MARK ALONG BOUNDARY LINES
  - CONGRESSIONAL SECTION LINES
  - RIGHT-OF-WAY LINES
  - CENTER LINES
  - LOT LINES PLATTED OR BY DEED
  - EXISTING EASEMENT LINES, PURPOSE NOTED
  - REQUISITED DIMENSIONS
  - CURVE SEGMENT NUMBER
  - C172-1
- UNLESS NOTED OTHERWISE, ALL DIMENSIONS ARE IN FEET AND HUNDREDS.



I hereby certify that this land surveying document was prepared and the related survey work was performed by me or under my direct supervision and that I am a duly Licensed Land Surveyor under the laws of the State of Iowa.

By: Edward H. Fejner, L.S. License No. 16873  
 Date: March 18, 2010

By: Thomas (revised date is December 31, 2010)



**CIVIL ENGINEERS  
 LAND PLANNERS  
 LAND SURVEYORS  
 LANDSCAPE ARCHITECTS  
 ENVIRONMENTAL SPECIALISTS**

1817 S. GILBERT ST.  
 IOWA CITY, IOWA 52240  
 (319) 351-8292  
 WWW.MMSCONSULTANTS.COM

5741 C ST. SW SUITE C  
 CEDAR RAPIDS, IOWA 52404  
 (319) 941-5186

**PLAT OF SURVEY  
 (RETRACEMENT)**

A PORTION OF THE E 1/2  
 SEC. 34-T33N-R2W  
 OF THE 5TH P.M.  
 LOUISA COUNTY,  
 IOWA

**MMS CONSULTANTS, INC.**

Date: 12/01/2009

Designed by: RSN  
 Checked by: GDM  
 Drawn by: MMS  
 Project No.: 4572-017

Scale: NOT TO SCALE

Sheet No.: 1

of 1